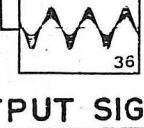
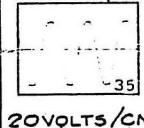
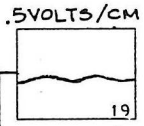
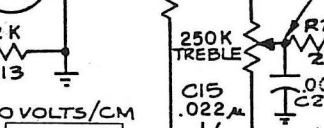
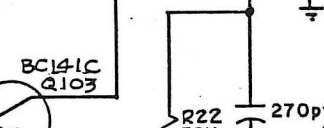
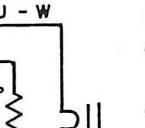
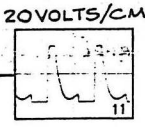
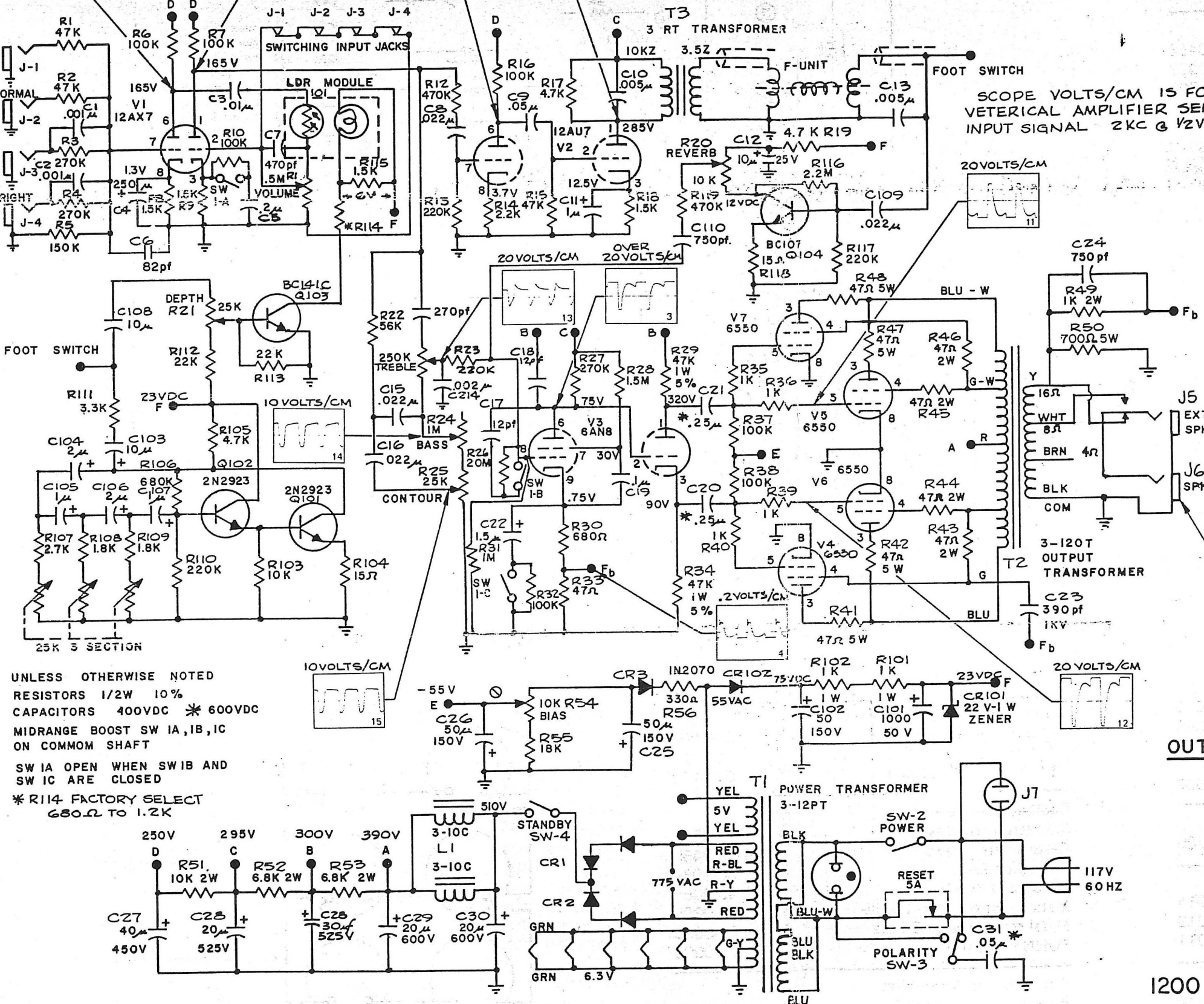


SCOPE VOLTS/CM IS FOR
VETERICAL AMPLIFIER SENSITIVITY
INPUT SIGNAL 2KC @ 1/2VOLT



OUTPUT SIGNAL



UNLESS OTHERWISE NOTED
RESISTORS 1/2W 10%
CAPACITORS 400VDC * 600VDC
MIDRANGE BOOST SW 1A, 1B, 1C
ON COMMON SHAFT
SW 1A OPEN WHEN SW 1B AND
SW 1C ARE CLOSED
* R114 FACTORY SELECT
680Ω TO 1.2K

PARTS LIST

Diodes, Rectifiers

CR1, & CR2	K416	22-0416
CR3, & CR102	IN 2070	22-2070
CR101	22V zener	22-0220

Vacuum Tubes

V1	12AX7 preamp	26-0070
V2	12AU7 reverb amp	26-0060
V3	6AN8A phase inverter	26-0040
V4, V5, V6, & V7	6550 power output	26-0080

Transistors

Q101 & Q102	2N3923	22-2923
Q103	BC141C	22-0141
Q104	BC107B	22-0107

Transformers

T1	3-12PT power transformer	28-2312
T2	3-120T output transformer	28-1312
T3	3-RT reverb	28-3300

Choke

L1	3-10C choke	28-3100
----	-------------	---------

Filter Capacitors

C27 & 28	20uf at 525 V	11-0000
C29 & 30	20uf at 600 V	10-8560
C25, 26 & 102	50uf at 150 V	11-4550
C101	1000uf at 50V	10-2580
C31	.05uf	10-8530
C4	250uf	11-0050

Switches

SW1-A, B, & C	6 contact switch - DPDT	24-0045
SW2	power switch	24-0020
SW3	polarity switch	24-0010
SW4	standby switch	24-0040

LDR - 101

21-0002

Circuit Breaker

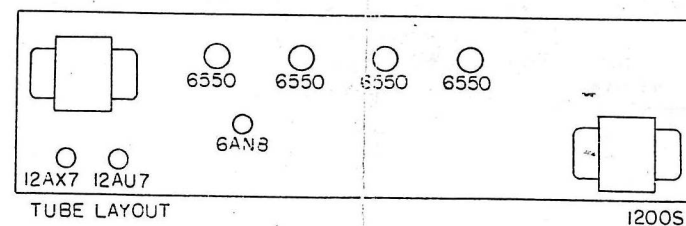
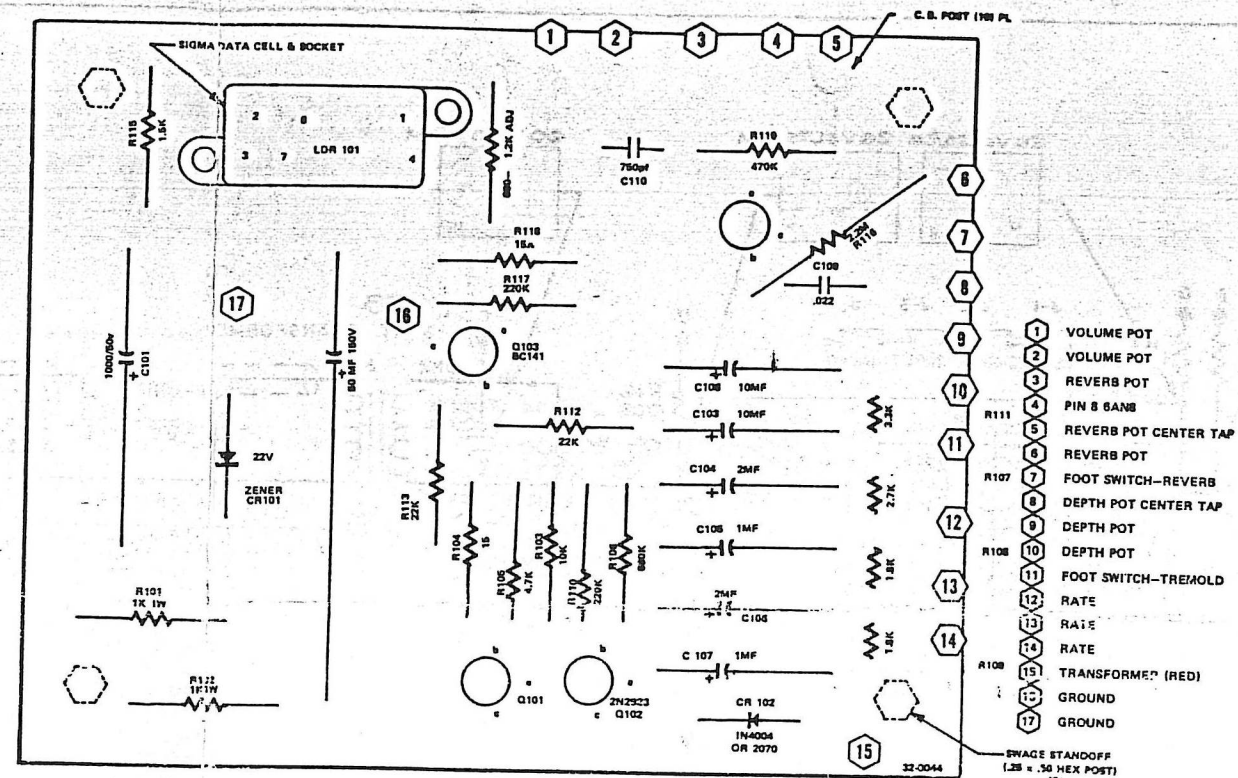
circuit breaker - 5 amp hold 5 - surge 7	52-0700
--	---------

Jacks

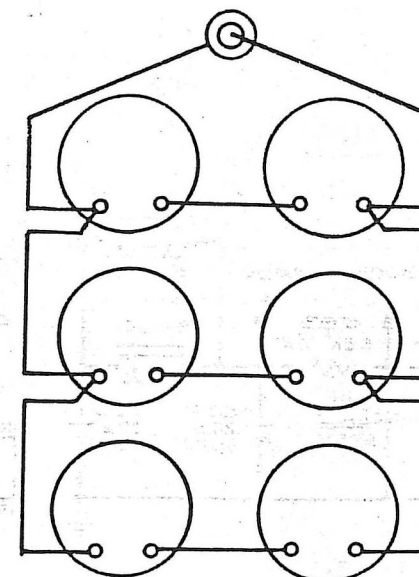
J 1, 2, 3, & 4	13E switchable	67-0014
J5	13A jack	67-0013
J6	open circuit	67-0011

Control Knobs

Standard numbered knobs	59-5529
-------------------------	---------



Series/Parallel Speaker Hook up



Cabinet Component Speakers

12" Sunn guitar transducer	81-0009
12" Vega speaker	81-0125
12" JBL D123F speaker	81-0123

Cabinet Hardware

Standard handle assy	71-0007
Casters with screws	66-9459
Plastiglaze feet	58-1089
Metal feed thru washers	43-0061
Metal front corners - 3 hole	62-0805
Metal rear corners - 2 hole	62-8053
SUNN name plate	73-0090

Circuit Board Assemblies

Reverb - Vibrato board	32-0001
------------------------	---------